

**One Software
Controls
All Signs**

AlphaNET™ VERSION 3

DEMO AVAILABLE ONLINE
adaptiveDisplays.com

System Requirements

- Windows® 95/98/2000/ME/XP or Windows® NT Workstation
- 100 MB hard disk space
- CD ROM
- RS232 (Serial Port) or LAN access

Software Kit Includes

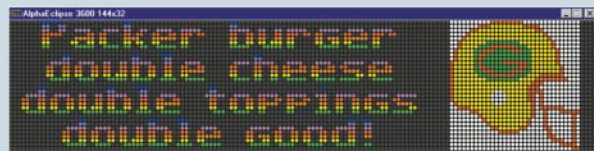
- AlphaNET Version 3 CD and AlphaNET CBT— learn-as-you-go computer based training module
- Easy-to-follow installation wizard
- Online help
- Jasc® Paint Shop Pro Version 5
- Animation Shop Version 1

Features

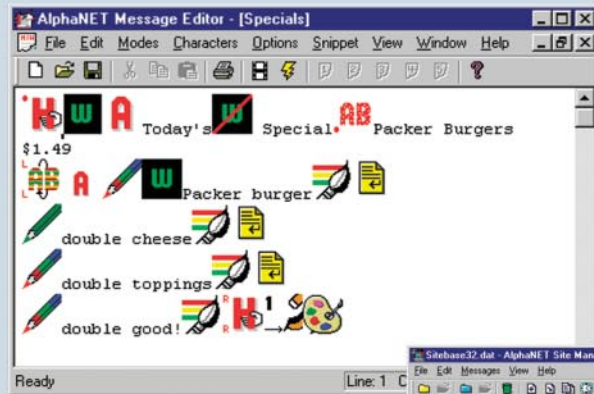
- Schedule messages to display at different times, locations and days
- “Message Simulator” allows you to view messages before they are actually displayed
- Allows user to have a network of displays via serial addressing, modems, wireless, and Local Area Network (LAN)
- Enables use of graphics and animations in popular formats
- Contains a counter feature to display minutes, hours or days to an event
- Supports international characters
- Ability to send messages to individual or groups of signs
- Includes ActiveX control for real-time applications
- Provides support for Alpha plug-ins
- Supports a wide variety of scanners

AlphaNET messaging software enhances every aspect of electronic messaging—from sending and creating, to the editing of text, animations and graphics. AlphaNET software brings together all the essential tools for realizing the full potential of Alpha® displays, with unique features that include: high-level capabilities for group messaging (via serial, modem, wireless or LAN network), an animation library and support for .GIF and .BMP files, calendar/date message scheduling, Jasc® Paint Shop Pro, Animation Shop Pro (PSP), Site Manager, and Message Emulator, all within a useful and intuitive interface.

Create multiple messages to communicate special events, incentives, news, and congratulations that contain text with logos, graphics and animations. For added versatility and message enhancement, included is a unique counter feature to display the minutes, hours or days to an event or occasion.

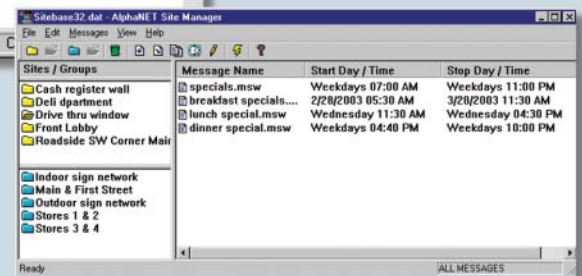


The Simulator is used to preview messages, text, graphics and animations that you create.



The Message Editor is used to create messages for displays. Text graphics and animations can be used in messages.

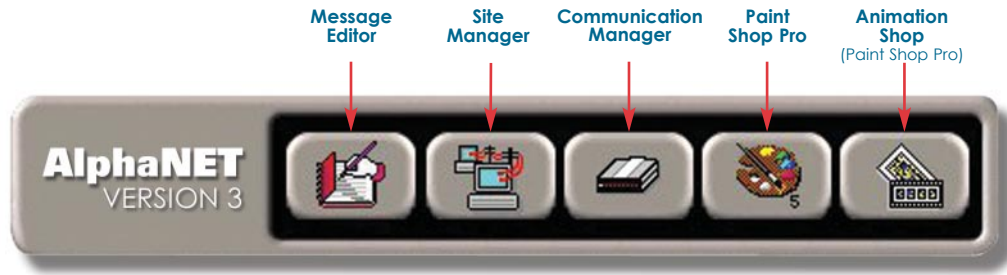
The Site Manager is used to set up “devices” (methods of communicating with displays), “sites” (locations of displays), and “groups” (a collection of one or more sites).



PSP Animation Shop features high-quality, easy-to-use creative effects, features, and optimization options. Create GIFs in one or hundreds of colors and animation effects.



Start Up Bar Overview



Message Editor – Used to create messages.

- **Format message:**
 - Presentation style
 - Text size and color
 - Line position
 - Presentation speed
- **Embed in message:**
 - Time and date
 - Temperature*
 - Animations
 - Graphics
- **Simulate message**

Site Manager – Used to schedule and send messages.

- **Define sign network options:**
 - Sign address
 - Memory configuration
 - Groupings
 - Time zone adjustments
 - Level of error checking
- **Send messages to signs**
- **Define message schedule** (time and date)
- **Define counter functionality**

Communication Manager – Manages communications to sign.

- **Maintains transmission log**
- **Interfaces to sign via**
 - Modem
 - PC COM port
 - Wireless
 - Local Area Network (Ethernet)

Paint Shop Pro – Used to create graphic images.

- Draw or import images
- Scan photos and images
- Color and size images

Animation Shop – Used to create animations.

- Create or import animations (GIF format)
- Create/import graphics (BMP format)
- Preview animations
- Color and size animations

Active X Control – For real-time data display.

- Insert real-time variable updates
- Use AlphaNet to create message format and variable locations in your messages

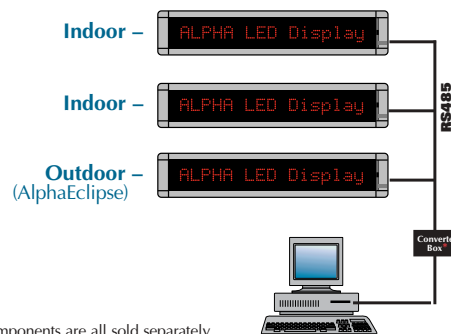
*Temperature options available on AlphaEclipse™ outdoor LED models only

One Software Controls All Sign Networks – Indoor/Outdoor

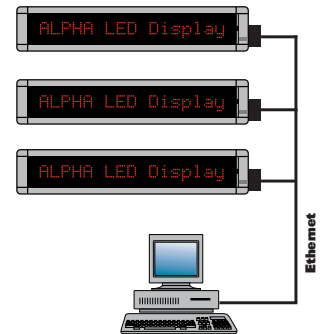
Single Sign Network



Multiple Sign Network



LAN Network



*The RS485 converter box, Ethernet Adapter and wireless components are all sold separately.